

# Dispersion Series

# DX12

## Multi-purpose coaxial wedge, passive

Two-way coaxial, passive cross over  
1 x 12" Neodymium  
1 x HF1" Neodymium

## Features

Clarity and sound precision  
Frequency and phase linearity  
Compactness and low profile  
Compatibility with DX15  
"All inclusive" ergonomics

## Applications

Nearfield and mid-range listening  
Main FOH or additional reinforcement  
High precision stage monitoring  
"Touring" and mobile installations

## Specifications

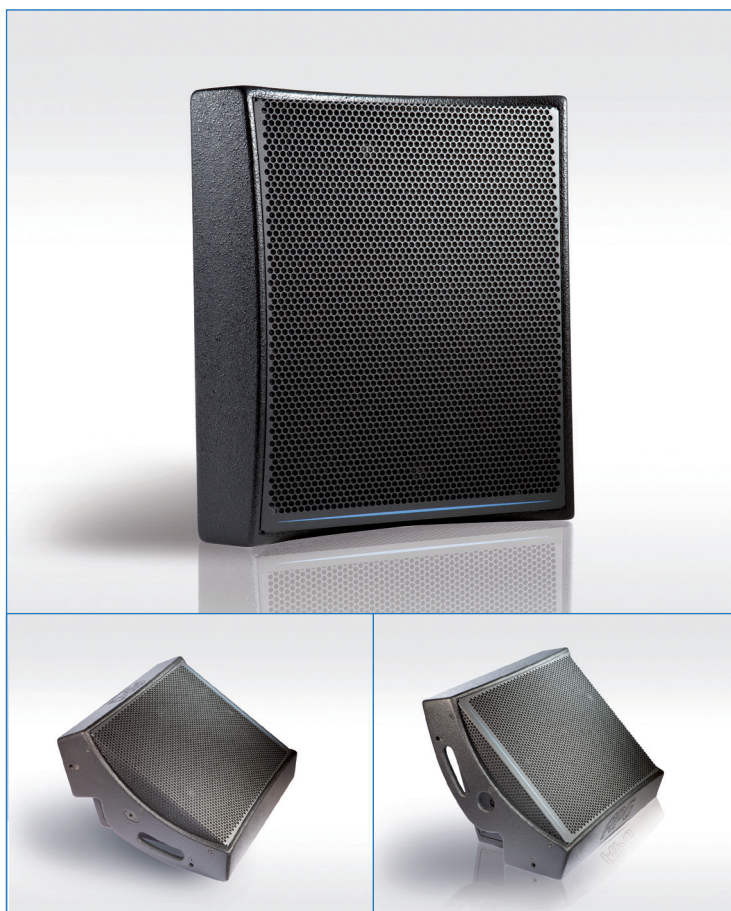
50 Hz - 20 kHz @ -10dB  
136 dB SPL max @ 1m  
90° x 90°  
400 W AES - 8 ohms

## Mono amplification

The DX12 is a two way, compact wide band multipurpose speaker. The mid/low transducer is a 12" neodymium bass reflex. The DX12 takes advantage of a proprietary technique of forced thermal transfer, which drastically reduces thermal compression effects, resulting in exceptional sound pressure capacity down to 60Hz. The high frequency section comprises a HF 1" neodymium compression driver offering extremely low distortion and frequency extension up to 20kHz.

The passive filtering is designed to manage the phase alignment of the speakers and to obtain amplitude and linear phase responses in with a crossover that limits the distortion ratio. The original cabinet design naturally enables two different angles as a floor monitor (30° for near-field and 45° for far-field applications), or it may be pole-mounted or

flown for use as a FOH, delay or in-fill system. It also integrates 2 handles for quick and easy handling in all positions and cable plugs are protected. The 12APT90 option is an angle tuning plate with the ETDX12 bracket that is hidden in the sides of the cabinet. The QFS4 comprises 4 parts for a quick and secure hanging with bolts or pins. The DX12 works in mono amplification and requires the use of an APG processor in the musical high power applications. For low and very low frequency reinforcement, subs APG are recommended.



Multi purpose DX12 speaker in FOH and floor monitor

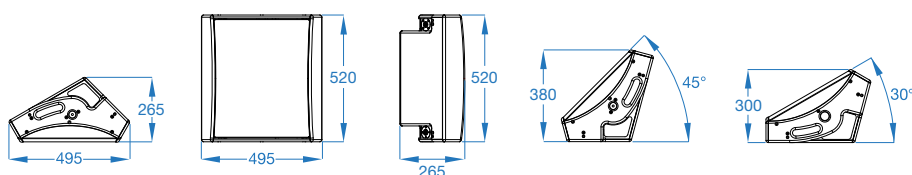
The DX12 is a compact, versatile, coaxial monitor speaker. It combines high acoustic performance with sophisticated and functional ergonomics. Thanks to the coaxial coupling of 12" and 1" drivers, the DX12 offers a very high acoustic definition and an excellent size/power ratio. The DX12 uses the same 1" driver as the DX15, in order to make the two products compatible and complementary, respecting the same criteria of linearity in frequency, phase and power. The asymmetric cabinet design enables two different angles as a floor monitor (30° for near-field and 45° for far-field applications), or it may be pole-mounted or flown for use as a FOH, delay or in-fill system. When combined with subwoofers The DX12 meets professional requirements in terms of versatility, compactness, light weight, and handling. It offers a low profile as a stage monitor, simple flying system, ultra-fast setup, and fully protected cables and plugs etc.

In wide band use, the DX12 is perfectly suited to vocal applications and stage monitoring, distributed systems or as a FOH complement (delay or front fill). Because of the size of its transducers, the DX12 is also ideal for high precision stage monitoring in jazz and acoustic music. When combined with subwoofers, the DX12 becomes a powerful, compact and easily transportable system ideal for medium-throw FOH applications.

# APG

# DX12

## Technical Specifications



### Features

Description	Multi-purpose coaxial wedge, passive
Usable bandwidth ( $\pm 10$ dB)	50 Hz - 20 kHz
SPL max @1m	136 dB SPL (1)
Nominal directivity ( $H^\circ \times V^\circ$ )	90° x 90° (2)
Nominal impedance	8 Ohm

### Components

Transducers	1 x 12" ND with ventilated driver 1 x 1" HF ND driver
Topology	Coaxial
Type of load	Bass reflex
Way and amplification section	2 way, mono amplified

### Power

AES	400 W (3)
Maximum power handling	1600 W (4)

### Construction

Cabinet / Painting	15 mm Finnish Birch plywood / Black impact resistant aquarethane
Dimensions H,W,D (mm)	20.4" x 19.4" x 10.4" (520 x 495 x 265 mm)
Weight (kg)	41.9 lb (19 kg)
Connectors	2 x Speakon NL4MP (5)
Handles	2 integral cut-out handle
Front face	Acoustically transparent perforated steel, 5 mm acoustic foam
Fittings	1 x 35 mm, pole mount socket
Color	Black RAL 9005
IP	43

### Options & Accessories

12ATP90	Angle Tuning Plate (0°- 90°) for ETDX12 (6)
ETDX12	Quick rigging lyre bracket for DX12 (6)
QFS4	4 integrated steel quick rigging parts (7)
SCDX12	Soft cover for DX12
COL	Specific RAL color option

### Electronics

Processors	DMS48F, DMS48F_D*
Amplifiers	DA8, DA12 / QUATTROCANALI

D\* : Dante Option

- (1) Peak level @ 1m AES2-2012 2msr using 12dB crest factor pink noise with APG preset
- (2) Nominal directivity @-6dB
- (3) Continuous power according to AES2-2012 in DCR
- (4) Peak power according to AES2-2012 in DCR
- (5) SPEAKON connectors are wired hot pin 1+, cold pin1- (2+ and 2- are not connected)
- (6) ETDX12 is a 4 mm steel bracket allowing installation of speakers on either wall or ceiling with angle adjustment
- (7) The QFS4 option offers 8 rigging points thanks to screwed rings or quick release pins

Diffusion : July 2021 / DOP\_1375\_D

APG has a comprehensive research and development policy for the continual improvement of its products and service.

Due to this, new materials, manufacturing methods and technological changes may be introduced without prior notice. As a result, an APG product can differ from its published description in certain areas. However, unless otherwise indicated, its characteristics will always equal or better the published specifications.

**5 YEARS WARRANTY** \*A five years warranty covers passive filters, transducers and compression drivers. The warranty does not cover cosmetic damages and damages due to misuse, improper installation, or damages caused by alterations.

**APG**

ARBANE GROUPE - 8 Rue Johannes Gutenberg 44340 BOUGUENAI - FRANCE  
Tel. : +33 (0)2 40 46 66 64 - e.mail : contact@apg.audio - www.apg.audio

**arbane**  
groupe