

How to update Speakers Presets inside DA/ MPA Cloudpower Series amps?

English version

2.3

Release 2025-03

APG

Active
audio

DA1.4

DA2.8

DA6

MPA4350

MPA4700

MPA41500

General information

HowToUpdateSpeakersPresets
Cloudpower? EN - Version B
2025-03

APG France (Active Audio / Arbane Groupe)
8 Rue Johannes Gutenberg - 44340 Bouguenais- France
Phone: 02.40.46.66.64
www.apg.audio

DA Cloudpower Series Amplifiers (DA1.4 ; DA2.8 ; DA6) MPA Cloudpower Series Amplifiers (MPA4350 ; MPA4700 ; MPA41500)

Prerequisites

- 1) Download the latest version of the Speaker Presets Bank on your computer.

APG website: <https://www.apg.audio/en/products/software/electronic-control>

Active Audio website: <https://activeaudio.fr/public-address/en/downloads>

Note: The Speaker Presets Bank for APG and Active Audio DA/ MPA Cloudpower Series is the same for the two brands, in order to be able to mix loudspeakers brands on a same installation (i.e.: Active Audio StepArray for the PA System and APG DX for the monitors...).

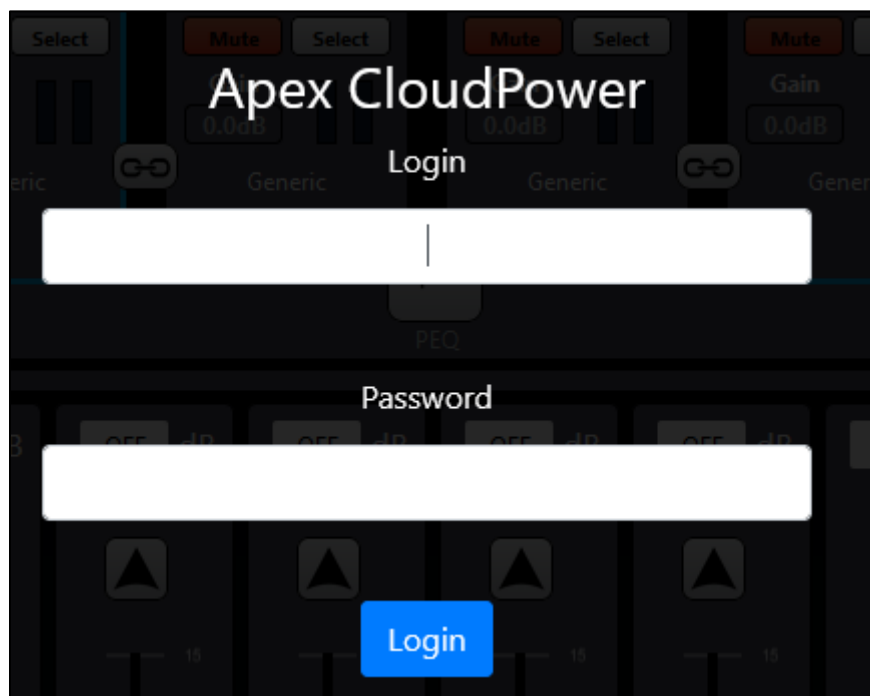
- 2) Download the latest version of the firmware on your computer.

APG website: <https://www.apg.audio/en/products/electronics/amplifiers/setup/193-da1-4.html>

Active Audio website: <https://activeaudio.fr/public-address/en/downloads>

Please follow this steps in order to update Speaker's Presets inside the On-board memory of the DA/ MPA Cloudpower Series amplifiers:

- Connect your APG DA / Active Audio MPA Cloudpower Series amplifier to your computer with an Ethernet cable and turn it on.
- Open a web browser on your computer and type the IP address of the amplifier to access to the IntelliCloud WebUI page.
- Use your credentials to login to the IntelliCloud webUI (by default: admin / admin).

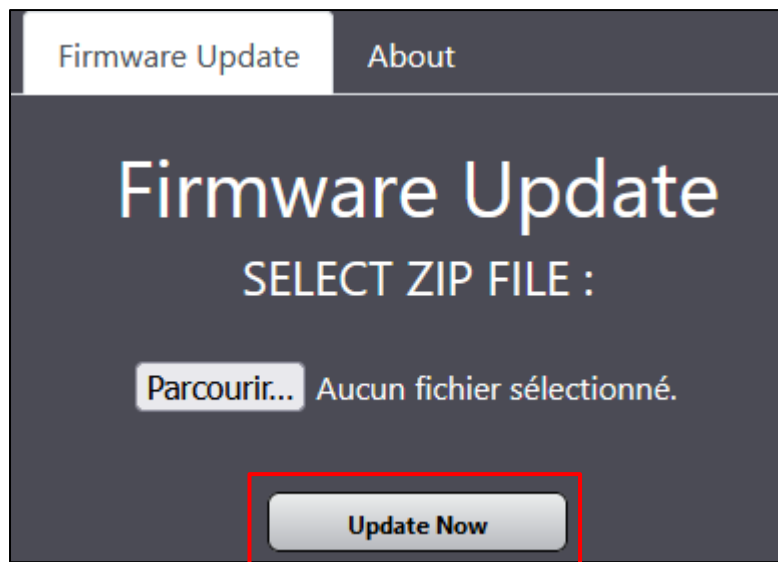


Firmware Update

If the firmware has to be updated, follow this instructions:



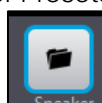
- Click on the Jog wheel to access the parameters of the amplifier.
- Click on the 'Firmware Update' tab and select the Firmware ZIP file that you downloaded from our website (i.e.: CP_V1.3.5S.zip).



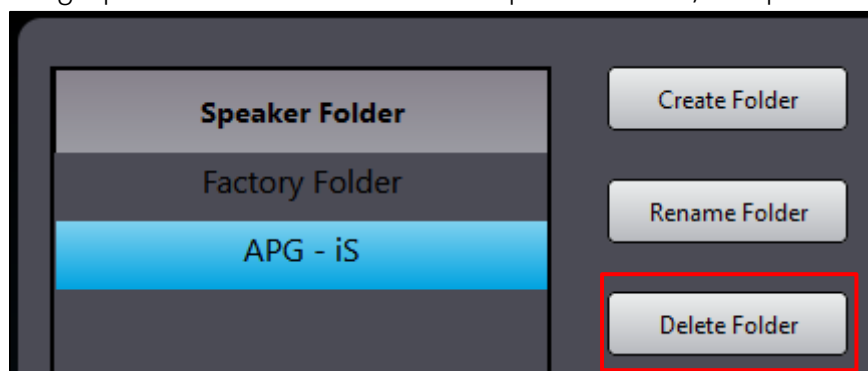
- Once you have selected the correct ZIP file, click on 'Update Now' Button.
- The front panel OLED display of the amplifier will show the updating progress.
- Do not turn the power off during the update.
- Once completed, the message "Please restart" will appear on the display.
- Turn the amplifier off and back on to complete the process.

Speaker Presets Bank update

In order to update the Speaker Presets Bank, please follow this instructions:



- Click on the 'Speaker' Menu of the 'Home Page'
- Delete all the existing 'Speaker folders' to delete all old Speaker Presets, except for the 'Factory Folder'.

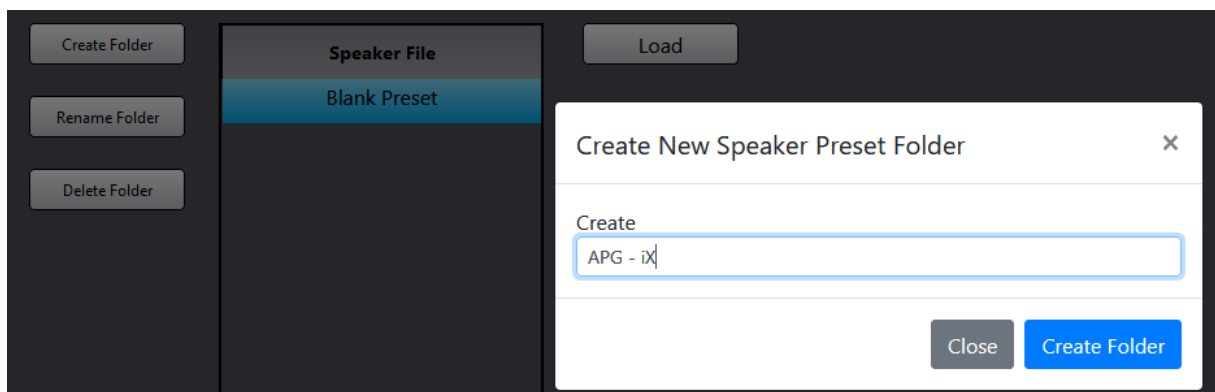


- UnZIP the Speaker Presets Archive on your computer (i.e.: 'ARBANE_INSTAL_AMPS_CLOUDPOWER_SPK_PRST_2-3.zip').

- Open the unzipped folder:

Nom	Modifié le	Type
APG - UC	23/11/2023 11:11	Dossier de fichiers
Active Audio - StepArray	23/11/2023 11:11	Dossier de fichiers
Active Audio - Vendome	23/11/2023 11:11	Dossier de fichiers
APG - Generic	23/11/2023 11:11	Dossier de fichiers
APG - DX	23/11/2023 11:11	Dossier de fichiers
APG - iS	23/11/2023 11:11	Dossier de fichiers
APG - iX	23/11/2023 11:11	Dossier de fichiers
APG - SPOT	23/11/2023 11:11	Dossier de fichiers
Active Audio - Generic	23/11/2023 11:11	Dossier de fichiers
Active Audio - iS	23/11/2023 11:11	Dossier de fichiers
Active Audio - RayOn	23/11/2023 11:11	Dossier de fichiers

- Go back to the IntelliCloud WebUI, click on 'Create Folder'
- Copy/ Paste the name of the first folder (i.e.: APG - iX) and click on 'Create Folder'

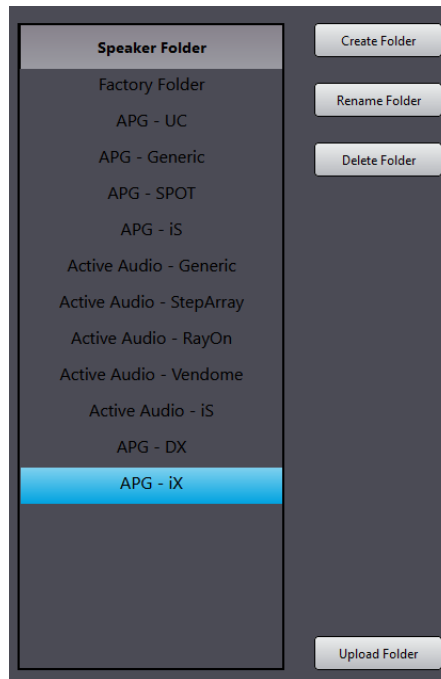


Once the folder created you have two possible ways to fill it with loudspeakers presets :

- Method 1) : Select the '.cpspkrf' file which contains all the loudspeakers presets of the Loudspeaker's Series.
- Method 2) : Select one by one each Loudspeaker Preset using the '.cpspkr' files.

1) Global Loudspeaker's Series Presets uploading, using CPSPKRFR file

Once created, select the folder to fill-in with new presets files, and click on 'Upload folder'.



Then, click on 'Browse' and select the '.cpspkrfr' file of the corresponding Loudspeaker's Series which contains all the presets files of this Loudspeaker's Series.

Upload speaker preset
✕

Please select a file :

Parcourir... Aucun fichier sélectionné.

Status:

- Select a folder speaker preset file

Close
Upload in folder

Active Audio - Generic.cpspkrfr	12/12/2023 09:15	Fichier CPSPKRFR	4 Ko
Active Audio - iS.cpspkrfr	12/12/2023 09:15	Fichier CPSPKRFR	22 Ko
Active Audio - RayOn.cpspkrfr	12/12/2023 09:15	Fichier CPSPKRFR	11 Ko
Active Audio - StepArray.cpspkrfr	12/12/2023 09:15	Fichier CPSPKRFR	38 Ko
Active Audio - Vendome.cpspkrfr	12/12/2023 09:15	Fichier CPSPKRFR	15 Ko
APG - DX.cpspkrfr	12/12/2023 09:15	Fichier CPSPKRFR	29 Ko
APG - Generic.cpspkrfr	12/12/2023 09:14	Fichier CPSPKRFR	4 Ko
APG - iS.cpspkrfr	12/12/2023 09:15	Fichier CPSPKRFR	40 Ko
APG - iX.cpspkrfr	12/12/2023 09:15	Fichier CPSPKRFR	43 Ko
APG - SPOT.cpspkrfr	12/12/2023 09:15	Fichier CPSPKRFR	22 Ko
APG - UC.cpspkrfr	12/12/2023 09:14	Fichier CPSPKRFR	68 Ko

Upload speaker preset ✕

Please select a file :

Parcourir... APG - iX.cpspkfr

Status:

● File ok, ready to upload "APG - iXfr" in APG - iX

Close
Upload in folder

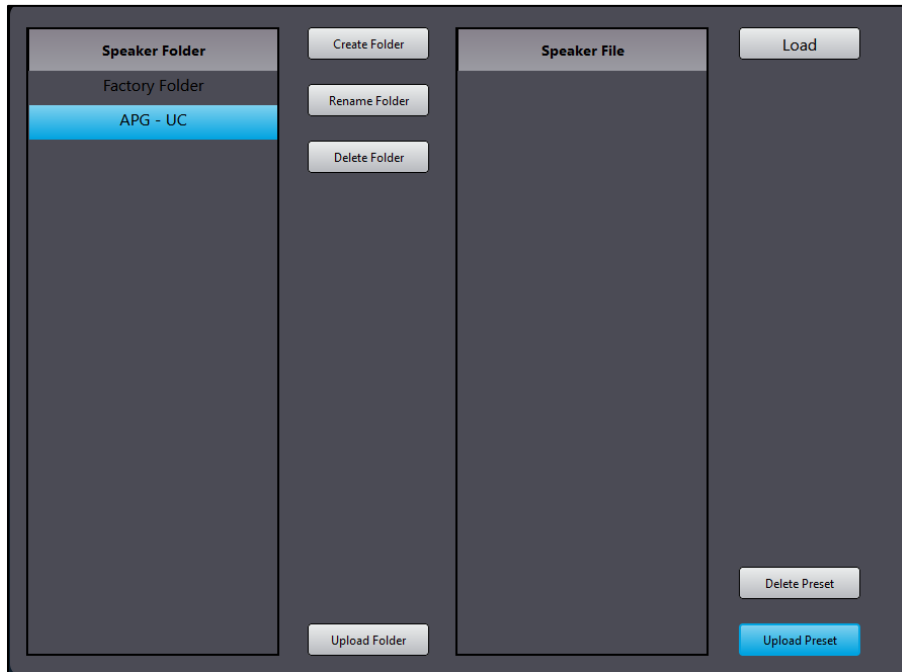
If the Status is Green, the file is ready to upload so you can click on 'Upload in folder'.
 If the Status is Red, the file has not the right type and may be a wrong one. Check if the current file to upload is a '.cpspkfr' file. Otherwise, select the right one.

As the upload is completed, the folder has been filled with all the Speaker Files of the corresponding Loudspeaker's Series.

Speaker Folder		Speaker File	
Factory Folder	Create Folder	iX12 FR (OEM)	Load
APG - UC	Rename Folder	iX12 WS110 (OEM)	
APG - Generic	Delete Folder	iX12 WS80 (OEM)	
APG - SPOT		iX15 FR (OEM)	
APG - iS		iX15 WS110 (OEM)	
Active Audio - Generic		iX15 WS80 (OEM)	
Active Audio - StepArray		iX5 FR (OEM)	
Active Audio - RayOn		iX5 WS110 (OEM)	
Active Audio - Vendome		iX6 FR (OEM)	
Active Audio - iS		iX6 WS110 (OEM)	
APG - DX		iX8-M2 FR (OEM)	
APG - iX		iX8-M2 WS110 (OEM)	
	Upload Folder		Delete Preset
			Upload Preset

2) Precise selection of a Loudspeaker Preset, using CPSPKR file

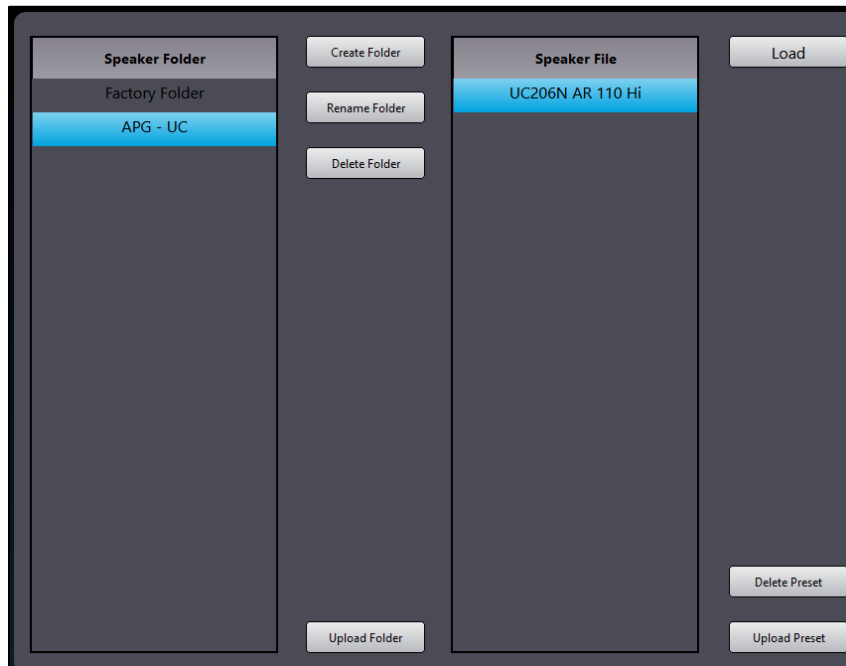
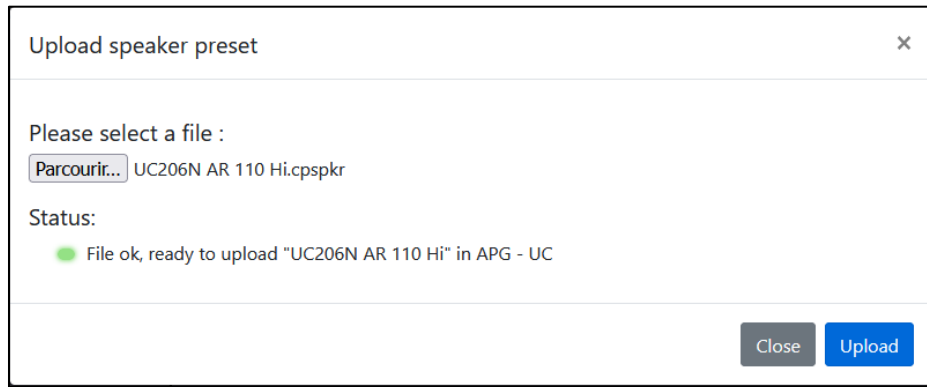
- Select the created folder and click on 'Upload Preset':



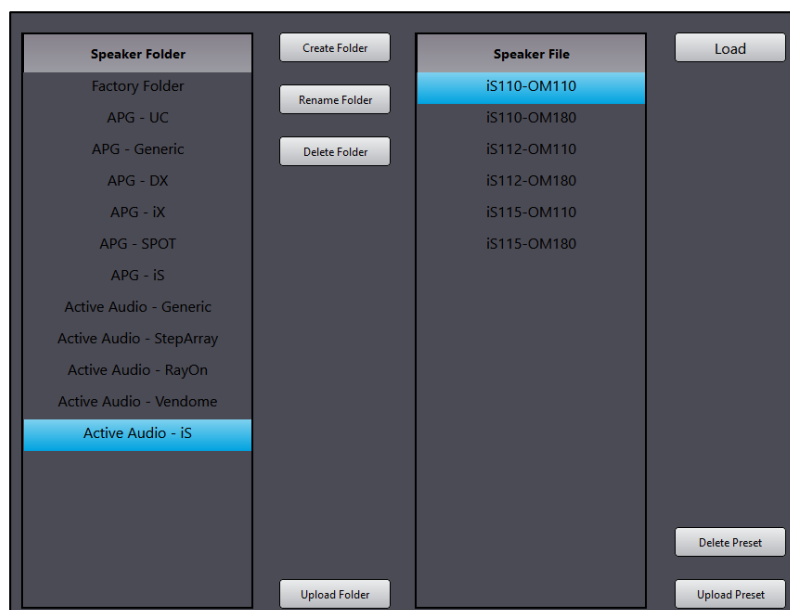
- Select the first Speaker Preset of the corresponding folder:

Nom	Modifié le	Type	Taille
UC206N AR 110 Hi.cpspkr	02/11/2023 15:41	Fichier CPSPKR	4 Ko
UC206N AR 110 Lo.cpspkr	02/11/2023 15:40	Fichier CPSPKR	4 Ko
UC206N AR 80 Hi.cpspkr	02/11/2023 15:40	Fichier CPSPKR	4 Ko
UC206N AR 80 Lo.cpspkr	02/11/2023 15:40	Fichier CPSPKR	4 Ko
UC206N AR 60 Hi.cpspkr	02/11/2023 15:40	Fichier CPSPKR	4 Ko
UC206N AR 60 Lo.cpspkr	02/11/2023 15:40	Fichier CPSPKR	4 Ko
UC206W AR 110 Hi.cpspkr	02/11/2023 15:40	Fichier CPSPKR	4 Ko
UC206W AR 110 Lo.cpspkr	02/11/2023 15:39	Fichier CPSPKR	4 Ko
UC206W AR 80 Hi.cpspkr	02/11/2023 15:39	Fichier CPSPKR	4 Ko
UC206W AR 80 Lo.cpspkr	02/11/2023 15:39	Fichier CPSPKR	4 Ko
UC206W AR 60 Hi.cpspkr	02/11/2023 15:39	Fichier CPSPKR	4 Ko
UC206W AR 60 Lo.cpspkr	02/11/2023 15:39	Fichier CPSPKR	4 Ko

- Click on 'Upload'



- The Speaker Preset has been updated.
- Reiterate the operation with every Speaker Preset of the bank and every folder.



- Your Speaker's Preset bank has been uploaded into the DA amplifier.

After performing the Loudspeaker Preset update, you can check if the Speaker's Preset have been updated by using the front panel of the amp (Jog wheel/ Presets / Speaker), example with 'APG - SPOT' folder below:





Arbane Groupe
8 Rue Johannes Gutenberg
44340 Bouguenais
France
Tél : 02.40.46.66.64
www.arbane-groupe.com